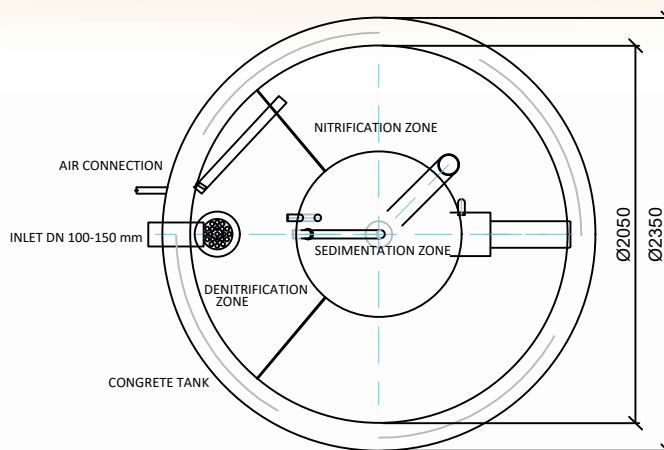
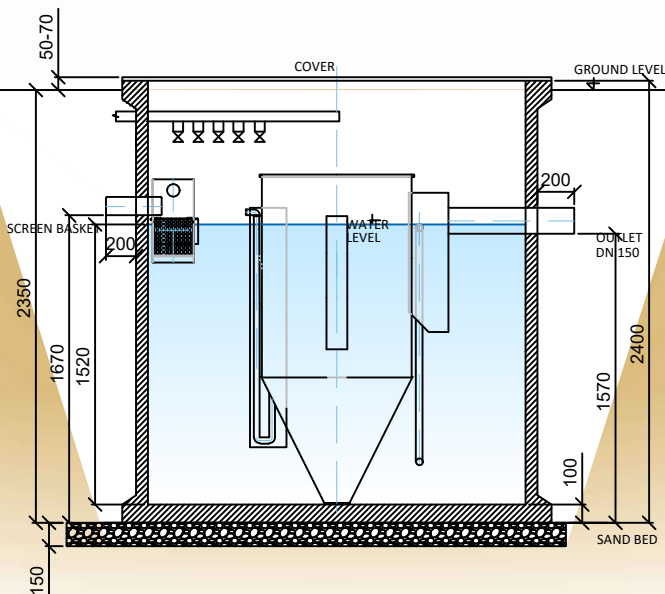


# Drawing of waste water treatment plant BioCleaner® BC 10 B



Note: Drawing of WWTP for backfill. Assembly make according to the Instruction for installation.

Volume of denitrification zone	1.25 m <sup>3</sup>	Maximum weight	4000 kg
Volume of nitrification zone	2.73 m <sup>3</sup>	Installed power	95 W
Volume of sedimentation zone	1.04 m <sup>3</sup>	Voltage	230 V
Total volume	5.02 m <sup>3</sup>	Protection of supply cable	4 A
Water level	1.52 m	Supply cabel	CYKY-J3x2.5

